



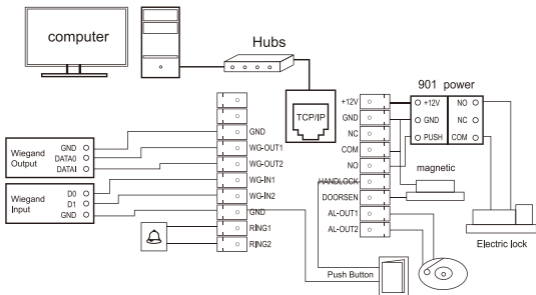
## Access Control Hardware Manual



## Key description

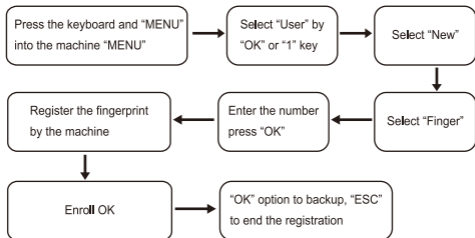
- OK** Confirm key: Make sure your current operation;
- MENU** Menu key: In the initial condition according to the key can enter the management interface;
- ESC** Cancel key: Cancel your current operation;
- ▲** Up key: Turning up menu items;
- ▼** Down key: Turning down menu items;
- 🔔** Doorbell key: Control the doorbell switch;
- Digital:** Digital key: Input digital 0-9;

## The wiring diagram



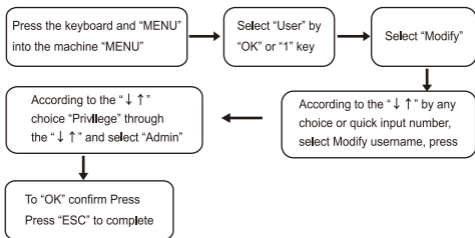


## 1.1 Registered users



**Note:** when choosing a password or ID card (machine with the function), the name of the person can be uploaded through the access control software;

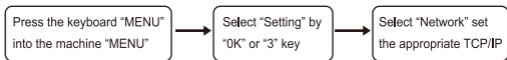
## 1.2 Administrator setting



**Note:** after setting the administrator, the menu needs to be confirmed by the administrator, the success of the menu;

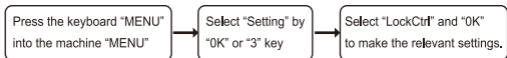


## 1.3 Communication settings



- ★Device IP:the default IP for the 192.168.8.198, you can according to the need for change;
  - ★Subnet mask:the default for 255.255.255.0, you can according to the need for change;
  - ★Default gateway:the default for 192.168.8.1, you can be the basis of the need for change;
  - ★Device port: communication used the port number, the default for 5005;
  - ★Server IP:the default for 192.168.0.1, real-time monitoring of the computer when IP address, you can be the basis of the need for change;
  - ★Server port:communication port, the default used for 7005;
  - ★Realtime Req:real-time monitoring fingerprint access to the computer when whether to send data. The default is no;
- Note: the need to use the network interface communication when it is necessary to carry out the setting, if the USB communication is directly inserted into the USB line;

## 2. Entrance guard function setting



- ★Time setting:is defined time for a week each day can unlock the definition of the time;
- ★Users:user entrance guard Settings is the user lock and unlock the set time combination;
- ★Unlock Time:is fingerprints machine control open or close the locks of the time;



- ★Lock Type Set: includes three kinds: No, Open, Close; "No" refers to not use magnetic switch on the door, "Open" often a door lock is to open, "Close" the door closed to lock magnetic;
- ★Anti Pass: To prevent the following entry;
- ★Alarm Time: is open the door for some time after began to call the police, this paragraph of time is door magnetic delay
- ★Turn Off Alarm: in alarm has trigger, and has ruled illegal operation, but not by this option to stop the police.

### 3. Fingerprint Integrated

- ① This is the preference when you buy the machine



- ② As seen here: grip the two sides of frame cover, pull outward slightly



- ③ As seen here: take out the frame cover from bottom to top



- ④ As seen here: put screws in place red marked, and install the device on the wall.





⑤ Put the frame cover back



⑥ Put the frame cover back from top to button



⑦ Lock the frame cover from outside



## 4. Packing List

In addition to the machines, the box also contains the following items:

- |                   |                                       |
|-------------------|---------------------------------------|
| ① Ring 1PCS       | ④ USB data cable 1PCS                 |
| ② Screws 4PCS     | ⑤ Operating Instructions 1PCS         |
| ③ Up stopper 4PCS | ⑥ Terminal (2P, 3P, 4P, 10P each one) |